



Preparing for Amazon Prime Day June 2026

A DSP Success Guide

How Delivery Service Partners Can Scale Operations, Drivers, and Performance During Peak Season.

PREPARED BY

Excelerate Technologies
Accelerate Excellence



Table of Contents

Introduction	01
Forecasting & Scaling	07
Dispatch & Fleet	08
Optimization & Safety	09
Communication & KPIs	10
Recovery	11
Excelerate Support	12

An Introduction to Amazon Prime Day 2026

For Delivery Service Partners (DSPs), **Amazon Prime Day** creates a short window of **intense volume, tighter execution requirements, and heightened expectations** from customers, station teams, and drivers.

During Prime Day, the **volume per route increases by 2.25 X** and the **Number of Routes increases by almost 15%**. DSPs must plan strategically for three distinct stages:

Pre-Prime

T-30 to T-1

Preparation & Planning

Prime Window

T+0 to T+4

Peak Volume Execution

Post-Prime

T+5 to T+12

Recovery & Evaluation

Pre-Prime preparation

4 WEEKS BEFORE THE PRIME WEEK

Amazon DSPs should plan for Pre-Prime by looking at following key aspects:

Volume Forecasting

Connecting with Amazon Area Manager at the warehouse to get a sense of forecast for the volume increase.

Workforce Management

Plan, recruit and train new drivers as needed.

Financial Load Planning

Plan for increased accounting load – such as payroll, invoice validation etc.

Dispatch & Fleet Checks

Focus on dispatch operations such as fleet checking, rostering with back ups etc.

Pre-Prime Action Plan & Checklist

CATEGORY	ACTION POINT	STATUS
Planning	Connect with Amazon Area Manager to align on the volume forecast.	Done / ND / NA
Planning	Confirm precise number of projected routes to be added.	Done / ND / NA
Planning	Understand zone-specific volume increase per route.	Done / ND / NA
Recruitment	Determine total volume forecast limits at the home station.	Done / ND / NA
Recruitment	Scale the hiring pipeline in alignment with route projections.	Done / ND / NA
Recruitment	Onboard and field-qualify backup drivers weeks ahead of peak.	Done / ND / NA
Recruitment	Rank active drivers based on capability to carry double volume.	Done / ND / NA
Accounting	Automate ADP and Cortex comparisons to log hours seamlessly.	Done / ND / NA
Accounting	Establish validation systems to capture peak rate compensations.	Done / ND / NA
Dispatch	Identify complex apartments/rural zones and map to pro drivers.	Done / ND / NA
Dispatch	Hold training refreshers for safe driving, scanning, and location drops.	Done / ND / NA
Dispatch	Simulate a mock heavy load weekend to diagnose fleet friction.	Done / ND / NA
Dispatch	Complete thorough physical check of the entire fleet 2 weeks prior.	Done / ND / NA
Dispatch	Cross-train dispatchers and safety leads to prevent call-out friction.	Done / ND / NA

How Can Excelerate’s Innovative Solutions Help You?

1. Recruitment: AI Voicebot Integrated with Smart Recruiters

Qualifies candidates as soon as they Apply on Smart recruiters – [24*7*365](#). Improves Candidate pipeline significantly while lowering job posting costs .

2. Accounting: Agentic AI-led Time Card Validation

Saves significant time for organization by automating the validation and comparing cortex with ADP data, then verifying directly with drivers to seamlessly update ADP.

Prime Day(s): 4-Day Execution Window

OPERATIONAL CAMPAIGN EXECUTION

Dispatch and Station Coordination

- **Arrive early:** Avoid dock congestion and allow drivers time to inspect, load, and organize their vans, which is critical when they have 400+ packages.
- **Maintain a tight cadence:** Continuous live updates with the station regarding rescue needs, stalled routes, or weather/traffic issues so they can redistribute as needed.

Route Management During the Day

- **Strategic Assignment:** Deploy experienced drivers on the hardest or densest routes (rural or complex apartments), and pair new drivers with trainers or assign them simpler, denser suburban routes.
- **Monitor In-Day Metrics:** Live tracking of routes behind schedule, high “not at location” or “customer requested” codes, and safety alerts; intervene early with support or rescues rather than letting issues compound late in the day.

Driver Support, Safety, and Morale

- **Clear Expectations:** Communicate clearly that “Prime Day means heavier routes but safety is still number one; no delivery is worth a shortcut.”
- **On-Site Logistics:** Plan extra water, snacks, and on-site support (yard marshals, dispatch help) because physically and mentally it feels like a multi-day peak.
- **Fatigue Supervision:** Enforce break schedules strictly and watch for driver fatigue; long hot days with heavy loads significantly increase accident risk if drivers push too hard.

How Can Excelerate’s Innovative Solutions Help You?

Excelerate has an experienced remote dispatch team which can work remotely, has high empathy value, and can bring down dispatch costs significantly

Our remote dispatch team can take care of extra load during peak windows and can roll off smoothly during non-peak cycles to ensure optimal expenses for your operations.

Post-Prime: 3–7 Days After

STABILIZATION & Q4 INTEL GATHERING

Recovery and Maintenance

Schedule van servicing and deep cleaning for the week after Prime where possible; Prime loads are notoriously tough on vehicles (brakes, tires, cargo areas). Review driver schedules to allow dedicated rest days and systematically prevent burnout heading into the rest of summer and Q4 pre-planning.

Metrics Review with your AM / Station

Analyze peak performance metrics: on-time rates, rescues, DNRs (did not receive/attempt), safety incidents, and customer complaints vs baseline days. Use Prime performance as an early indicator for where your operations will struggle or win during peak season (e.g., apartment routing, rural density, backup staffing)

Process Improvements

Document what worked (staging layout, route assignment logic, driver incentive programs) and what did not, so you have a clean, actionable playbook for October events and the ultimate Q4 peak.



PRIME DAY READINESS PRINCIPLE

“Peak performance is built before peak volume arrives. Treat Prime Day as an operational campaign, not a one-day event.”

Why Prime Day Matters for DSPs

Prime Day affects nearly every part of DSP operations. Package volume can increase sharply, route complexity can rise, and normal staffing assumptions may no longer be enough.

Cons (or Operational Challenges)

- Increased package volume requiring more drivers.
- Expanded operating windows.
- Higher workforce requirements (Dispatchers, Recruiters).
- Greater pressure on safety compliance.

Pros (Business Opportunities)

- Additional revenue from increased route activity.
- Stronger Amazon performance metrics.
- Improved driver engagement via incentives.
- Better reputation with station leadership.

Forecasting & Scaling

Problem: Increase in Number of Routes.

Solution: How to Make Sure Execution is Flawless.

Forecasting is the foundation of Prime Day planning. DSPs should combine historical performance, station-level guidance, local demand patterns, and workforce availability to build a realistic readiness plan.



PRIME DAY READINESS ROADMAP

Timeline	Focus Area	Primary Outcome
90 Days Before	Hiring & Recruiting	Pipeline active early to ensure less absent drivers.
60 Days Before	Training & Onboarding	Drivers qualified
45 Days Before	Fleet Inspections	Issues identified early
30 Days Before	Route Simulations	Workflows tested

Problem: Ensuring the Quality & Quantity of Drivers

Recruiting enough qualified drivers is one of the biggest constraints during Prime Day preparation.

Strategies for Fast Recruitment

- Start recruiting 60–90 days before.
- Automate screening and scheduling.
- Use AI and BOT-enabled workflows.

Retention During Peak

- Attendance incentives.
- Performance bonuses.
- Wellness and fatigue management.

Dispatch & Fleet

Problem: Dispatch Bottlenecks & Exception Management.

Solution: Dispatch Excellence During Peak Operations.

Dispatch teams are the operational nerve center during Prime Day. They coordinate route assignments, communication, exceptions, schedule changes, and escalation decisions.

CORE RESPONSIBILITIES

- ✓ Route assignments & check-ins
- ✓ Real-time escalation support
- ✓ Exception management

Automation Opportunity

BOT-enabled dispatch support can send inspection reminders and track route exceptions automatically.



Problem: Vehicle Breakdowns & Grounded Routes

Solution: Proactive Fleet Readiness and Vehicle Compliance

- Inspect tires, brakes, lights, and batteries.
- Preventive maintenance completion.
- Maintain emergency reserve vans for route failures and peak overflow situations.
- Maintain reserve vehicles.
- Confirm registrations & insurance.

Optimization & Safety

Problem: Route Inefficiency & Increased Costs

Solution: Route Optimization and Delivery Performance

Efficient routing becomes more important as volume rises. Strong route planning reduces fuel cost and limits driver fatigue.

Metric	Why It Matters	Improvement Lever
On-Time Delivery	Customer satisfaction	Realistic planning
Route Completion	Execution quality	Balance workload
Driver Safety Score	Workforce wellbeing	Safety coaching



Problem: Manual Workflows & Driver Safety Risks

Solution: Technology for DSP Success & Safety-First Practices

- Recruiting automation
- Reporting & KPI automation
- Compliance workflow automation
- Daily safety briefings
- Hydration & fatigue reminders
- Vehicle inspections before dispatch

Communication & KPIs

Problem: Misalignment Between Teams & Station

Solution: Streamlined Internal & External Communication

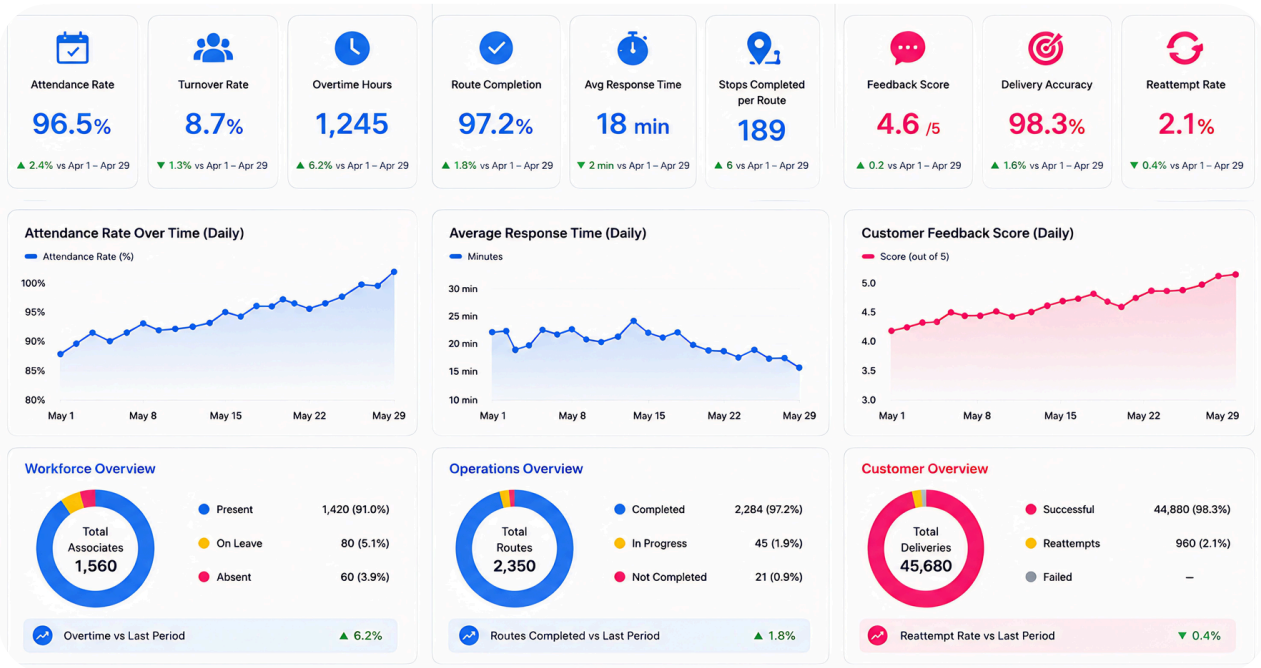
Problem: Lack of Visibility into Operations

Solution: Tracking Data, Metrics, and Performance KPIs

Workforce
Attendance, turnover, overtime

Operations
Route completion, response time

Customer
Feedback, accuracy, reattempts



"The best KPI review does more than explain what happened – it identifies what to improve before the next peak event."

Recovery

Problem: Post-Peak Burnout & Driver Turnover

Solution: Post-Prime Day Recovery & Retention Strategies

Conduct a Prime Day Review

> Review operational performance against plan.

> Collect feedback from drivers and dispatchers.

> Analyze customer metrics and fleet reliability.

> Document lessons learned for future peak periods.



Retain Top Drivers



Offer bonuses and recognition for peak performance.



Improve schedule consistency.



Create growth opportunities for standout drivers.



Keep engagement active with consistent feedback loops.

Accelerate Support

Accelerate: Your Solution for Prime Day Operations

Accelerate helps DSPs improve operational efficiency during peak periods through technology-enabled workforce, recruiting, and dispatch support solutions.

Expert HR & Recruiting

- ✓ Accelerated driver hiring workflows.
- ✓ Faster onboarding and qualification.
- ✓ 24/7 BOT-enabled recruiting support.

Dispatch & Operational

- 🚚 Vehicle inspection scheduling
- 📶 Compliance & visibility monitoring
- 💬 Real-time communication workflows

Final Thoughts

Amazon Prime Day 2026 is an opportunity for DSPs to strengthen delivery performance and prove operational resilience. Success depends on preparation, workforce readiness, dispatch visibility, fleet reliability, driver wellbeing, and technology-enabled execution.

DSPs that invest in recruiting systems, dispatch optimization, automation, and driver support before peak volume arrives will be better positioned to manage higher delivery demand while protecting safety and customer satisfaction.

About Accelerate

Providing technology-enabled workforce, recruiting, and operational support solutions designed for Amazon DSPs.

For More Information

- Driver Recruitment Support
- BOT-enabled Workforce Solutions
- Dispatch Operations Assistance
- Prime Day Readiness Support

 **Scale Your Operations with Accelerate Technologies**

Contact us to prepare for Prime Day 2026